

# LCPCC Relaunch

January 31, 2023

1

## What is a “Coalition?”

### **A coalition is**

- An alliance of diverse interest groups, individuals &/or organizations
- that join their human and material resources
- working together to produce a specific change
- that they are unable to deliver as independent individuals or separate organizations.

### **A coalition is not**

- A single, separate organization.

2

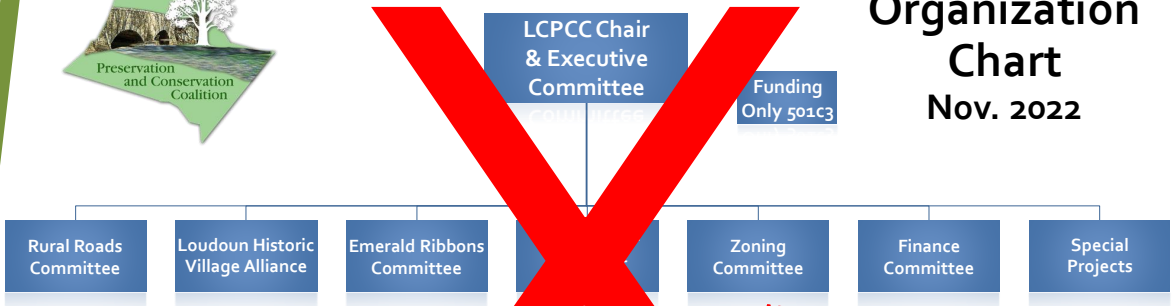
# What is LCPCC's Mission?

*To provide a strong voice for participating organizations in public forums, and a convenient and effective way to share information, issues, and ideas.*

3



## Organization Chart Nov. 2022



*Not representative of an actual "coalition" management structure.*

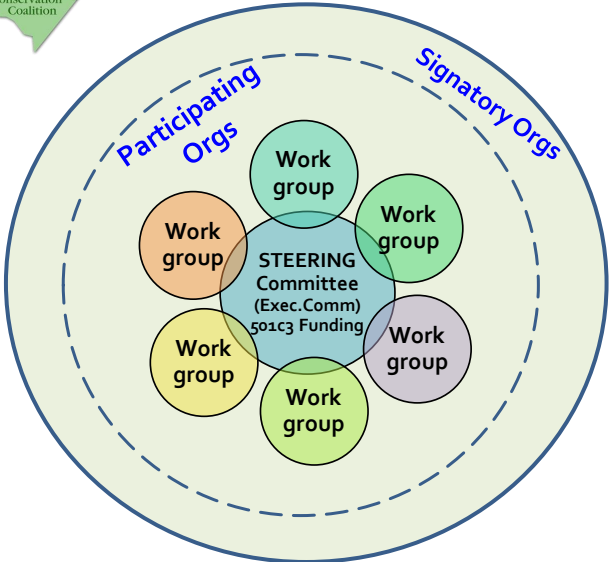
**55 ORGANIZATIONS:**

350 Loudoun, Aldie Heritage Association, Aldie Mill Historic Park, Americas Routes, Banshee Reeks Chapter of the Archeological Society of Virginia, Bike Loudoun, Bluemont Citizens Association, Bluemont Heritage (formerly Friends of Bluemont), Blue Ridge Center for Environmental Stewardship, Blue Ridge Mountain Civic Association, Catoclin Coalition, Catoclin Creek Scenic River Advisory Committee, Community Foundation of Loudoun and Northern Fauquier Counties, Edwin Washington Project, Farmer's Clubs of Loudoun, Friends of Banshee Reeks Nature Preserve, Friends of the Blue Ridge Mountains, Friends of Claude Moore Park, Goose Creek Association, Goose Creek Scenic River Advisory Committee, Hillsboro Preservation Foundation, Journey Through Hallowed Ground, Keep Loudoun Beautiful, Land Trust of Virginia, League of Women Voters of Loudoun County, Leesburg Garden Club, Lincoln Community League, Lincoln Preservation Foundation, Loudoun County Equine Alliance, Loudoun County Farm Bureau Inc., Loudoun Heritage Farm Museum, Loudoun Historic Village Alliance, Loudoun Preservation Society, Loudoun Walking Club, Loudoun Watershed Watch, Loudoun Wildlife Conservancy, Lovettsville Historical Society, Mount Zion Cemetery of Aldie, Piedmont Chapter, Virginia Native Plant Society, Piedmont Environmental Council, Potomac Heritage Trail Association, Purrrellville Historical Society, Save Old Sterling, Save Rural Loudoun, Short Hill Historical Society, Snickersville Turnpike Association, The Sterling Foundation, Transition Area Alliance, Unison Preservation Society, Virginia Chapter, International Dark Sky Association, Virginia Piedmont Heritage Area Association, Waterford Citizens Association, Waterford Foundation, Waterford Union of Churches Cemetery

4



# COALITION Work Group Management Structure January 2023



### Steering Comm (ExCom)

- Facilitates communication of issues, concerns (monthly meeting, e-communication)
- Assist defining priorities for work group action
- Advise and support analysis efforts of work groups

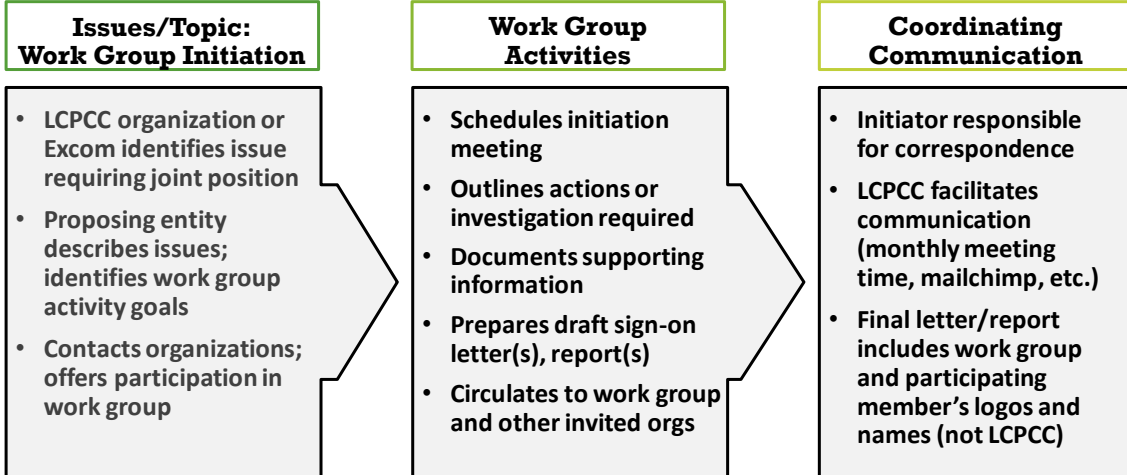
### Work Groups

- Initiate joint position efforts
- Invite other Participating Orgs to join work group
- Document positions
- Obtain sign-on from Signatory Orgs
- Distribute joint position letter, report or other deliverables

5

## LCPCC Core Competency: *Coordinated Communication*

### How to Facilitate Communication and Advocacy Work within the Coalition



6

## LCPCC Policies

- LCPCC has no legal status; is an informal group of non-profits and subject matter experts.
  - Participating/Signatory Organizations may not state they represent LCPCC or take a public position on behalf of all LCPCC organizations.
- Joint non-political advocacy positions to be established through Work Groups (defined as “groups” who do “work”).
  - Individual organizations may endorse a position and/or take their own public positions on issues (encouraged to do so).

7

## Coalition “Contacts”

CONTACTS: Included on LCPCC e-news distribution and listed on LCPCC website.

*However, requires organization ACTION:*

### Participating Organizations

- Attend LCPCC monthly meetings
- Join one or more Work Groups
- Sign on to non-political advocacy positions/letters/reports
- Individuals/SMEs encouraged to attend and join an organization.

### Signatory Organizations


- Generally do not attend meetings, but are encouraged to do so.
- Willing to join a work group
- Willing to sign on to non-political advocacy positions/letters/reports by invitation.

8

## Coalition Contacts – January 2023

The following organizations participate in the Coalition by receiving information, attending Coalition meetings, or providing information and resources for individual Coalition initiatives.

Participating organizations also take the lead to form work groups to address specific issues.



|  |  |
|--|--|
| Aldie Heritage Association                                     | Loudoun Climate Project                              |
| Aldie Mill Historic Park                                       | Loudoun County Equine Alliance                       |
| America's Routes   | Loudoun County Farm Bureau Inc.                      |
| Banshee Reeks Chapter of the Archeological Society of Virginia | Loudoun Heritage Farm Museum                         |
| Bike Loudoun   | Loudoun Historic Village Alliance                    |
| Black History Committee, Friends of Thomas Balch Library       | Loudoun Preservation Society                         |
| Bluemont Citizens Association                                  | Loudoun Wildlife Conservancy                         |
| Bluemont Heritage (formerly Friends of Bluemont)               | Loudoun Wineries & Winegrowers                       |
| Blue Ridge Center for Environmental Stewardship                | Lovettsville Historical Society                      |
| Blue Ridge Mountain Civic Association                          | Mount Zion Cemetery of Aldie                         |
| Catoctin Coalition   | Northern Virginia Conservation Trust                 |
| Catoctin Creek Scenic River Advisory Committee                 | Philomont Village Foundation                         |
| Community Foundation of Loudoun and Northern Fauquier Counties | Piedmont Chapter, Virginia Native Plant Society      |
| Edwin Washington Project                                       | Piedmont Environmental Council                       |
| Farmer's Clubs of Loudoun                                      | Potomac Heritage Trail Association                   |
| Friends of Banshee Reeks Nature Preserve                       | Purcellville Historical Society                      |
| Friends of the Blue Ridge Mountains                            | Round Hill Appalachian Trail Festival                |
| Goose Creek Association  | Save Old Sterling                                    |
| Goose Creek Scenic River Advisory Committee                    | Save Rural Loudoun                                   |
| Hillsboro Preservation Foundation                              | The Sterling Foundation                              |
| Journey Through Hallowed Ground                                | Unison Preservation Society                          |
| Keep Loudoun Beautiful   | Virginia Chapter, International Dark Sky Association |
| Land Trust of Virginia   | Virginia Piedmont Heritage Area Association          |
| League of Women Voters of Loudoun County                       | Waterford Citizens Association                       |
| Leesburg Garden Club   | Waterford Foundation                                 |
| Lincoln Preservation Foundation                                | Waterford Union of Churches Cemetery                 |