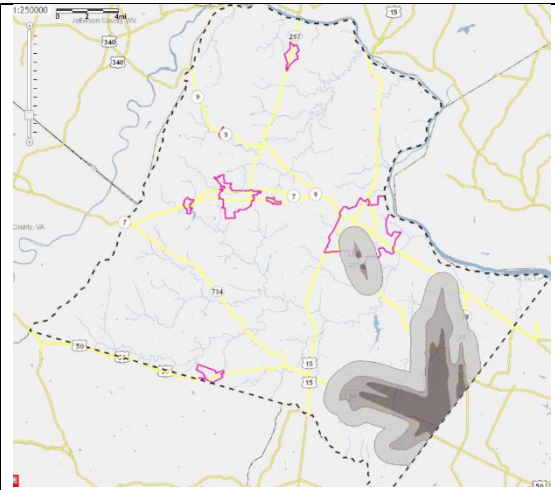


# LOUDOUN COUNTY OVERLAY DISTRICTS —

## Revised 1993 Zoning Ordinance (Source: Loudoun Mapping)

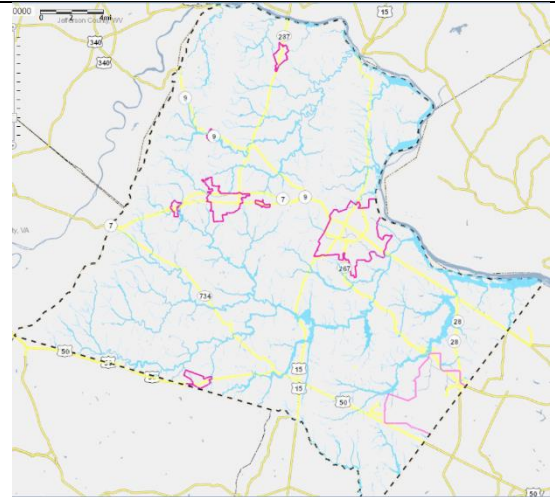
### 4.01 Airport Impact Overlay District (AIOD)

Purpose: Acknowledge the land use impacts of airports, regulate siting of noise sensitive uses, ensure that the heights of structures are compatible with airport operations, and complement Federal Aviation Administration regulations regarding noise and height.



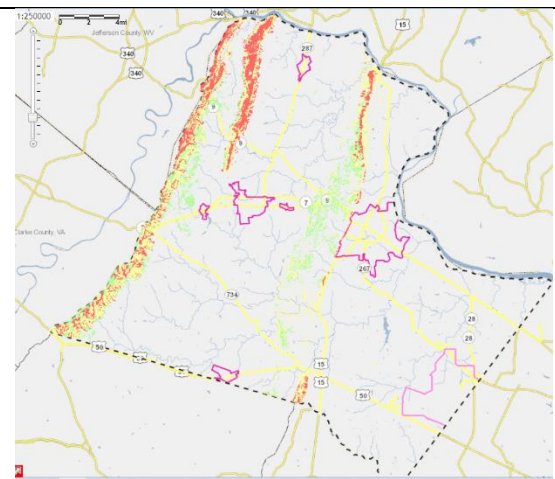
### 4.02 Floodplain Overlay District (FOD)

Purpose: Conserve the natural state of watercourses and watersheds to prevent loss of life and property; regulate uses, activities, and development which will cause increases in flood impacts; require uses and developments in areas susceptible to flooding to be protected flooding and flood damage and prevent individuals structures which are unsuited because of flood hazards.



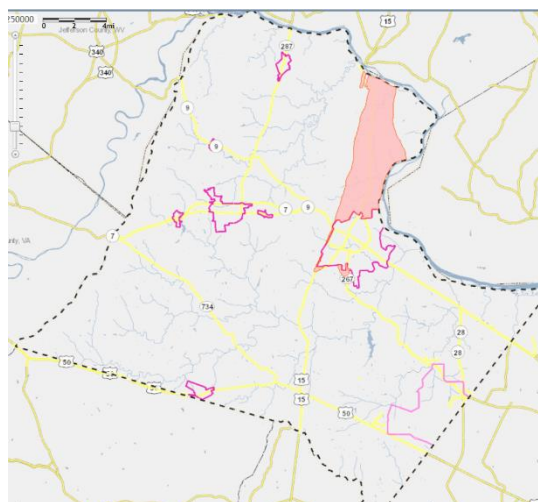
### 4.03 Mountainside Development Overlay District (MDOD)

Purpose: Regulate land use and development on the mountainsides of the County, to provide for low density residential development and assure mountainside development will not damage significant natural resource areas, wildlife habitats or native vegetation areas; prevent erosion and minimize clearing and grading; ensure development is compatible with topography and soils conditions.



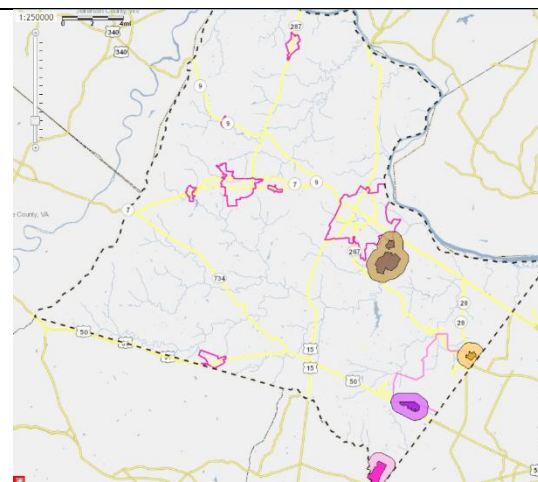
#### 4.04 Limestone Overlay District (LOD)

Purpose: Preserve and protect the geologic characteristics and the quality of the groundwater in limestone areas. A large area east of the Catoclin Mountain range in the Rural Policy Area of Loudoun County is comprised of limestone and “Karst terrain” areas. The terrain is characterized by the presence of sinkholes and rock outcrops, with potential for ground surface collapse and groundwater and surface water pollution, posing serious risks to public health, safety and welfare. Limestone area cannot support land development activity without performance standards and monitoring to: protect the health, safety and welfare of the public; protect groundwater and surface water resources from contamination; and reduce potential for property damage.



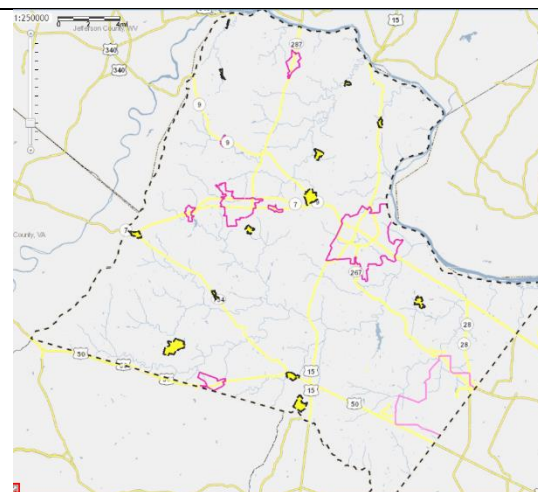
#### 4.05 Quarry Notification Overlay District (QNOD)

Purpose: Acknowledge the unique land use impact of a quarry on neighboring land uses and the need to notify the owners of the presence of a neighboring quarry.



#### 4.06 Village Conservation Overlay District (VCOD)

Purpose: Recognize the development patterns existing in traditional villages, considered to be valuable heritage resources, and to encourage the retention and reinforcement of the pattern, character and visual identity of the individual village.



## 4.07 Historic Overlay District

Purpose: Established to protect areas of special character or special historic interest or value which represent or reflect elements of the County's cultural, social, economic, political, architectural, and archaeological history; to protect and enhance the County's attraction to tourists and visitors; to provide for the education and general welfare of the people of the County; to protect against destruction of or encroachment upon historic areas.

